

Contact for inquiries:

Tim Geissler  
tim@jahnundjahn.com  
+49 171 8661767

Carolina Trigueiros  
carolina@jahnundjahn.com  
+351 919 932 262

Jahn und Jahn  
Rua de São Bernardo 15  
1200-823 Lisboa

Jahn und Jahn  
Baaderstraße 56 B und C  
80469 München

25.1 – 8.3.2025  
Rua de São Bernardo 15  
Lutz Braun  
flaming loneliness

# Lutz Braun

Reflections on my exhibition *flaming loneliness* at Jahn und Jahn, Lisboa 2025

A selection of works which have been gathered to be presented as an exhibition at Jahn und Jahn Lisboa, is foremost a great pleasure.

When the title took shape which happened before the choice of paintings and drawings was made, I sensed that a central aspect of my work was about to be brought to a point.

It can be felt as a contradictory juxtaposition of seriousness and mockery, of sincerity and self-loathing, of tragedy and charade.

It is present in the titles of works like *bound to fall* which sounds like a curse onto one's own ventures. Or there is *swedish hag 1899* which can be read as abusive towards old age. And *cosmic munchies* which holds an affirmative attitude towards the horrors of existence, signified by a decaying skull continuously and automatically eating up stardust.

Paintings like *Archäologie* which shows two individuals toasting drinks in a cave underneath a meadow and trees, or *Dirección Nacional de Migraciones Buenos Aires, 2009* which is about the Argentinian office of immigration that welcomed and registered German mass murderer Adolf Eichmann as an immigrant under the name of Ricardo Clement, in 1950. At this office, a historian named Uki Goni found a mother cat nursing her kittens, the animal family of them lying amongst the shelves and boxes filled with files.

And there is the title of the exhibition itself: *flaming loneliness*, combined with an image of the painting *Zeitlinse* which has been photographed on the easel where it also had been created. The painting shows an imagination of a burning town, probably after medieval times, but amidst the continuous reoccurrence of the plague. Associating historical and present catastrophes or tragedies with one's own psychological dilemmas is not necessarily pathological. It also holds a potential for empathy. However, it does partially consist of a self-centred approach towards events impacting general humankind in past, present, and future.

Almost ten years ago, in the summer of 2016, while staying with a friend in Bavaria, I had a number of quite intense conversations with a man who had fled from Somalia, some years before, after which he had ended up in southern Germany. He had wandered through desert and war zones, and had been attacked and even shot multiple times. And he had crossed the Mediterranean in a boat as underequipped and overcrowded, as we have seen on many images in the media, if we did not choose to look away. After telling many of his stories, Abdullah insistently inquired about what it would be like to live and work as an artist, eventually returning to his initial impression of the world of art as being "Crazy World". He would pass by me on his way out to go to work, see me draw or paint, and comment, if I was back in Crazy World again. Ever since the encounter with Abdullah, I try to imagine what his reactions would be when presented with the pictures I have painted and drawn. And it helps me to look for irony and humour to mediate between hard truths of my fellow human beings wherever they may be, and my own, personal tragedies, to still be able to acknowledge what life had and will have in store for me.

Lutz Braun, January 2025



Lutz Braun, *Dirección Nacional de Migraciones Buenos Aires 2009*  
acrylic on canvas  
180 x 200 cm

(LB/M 13)



Lutz Braun, *Dirección Nacional de Migraciones Buenos Aires 2009*  
detail

(LB/M 13)



Lutz Braun, *Remains and Memories*  
oil on stitched fabric  
85 x 110 cm

(LB/M 40)



Lutz Braun, *One Hundred Years*  
oil on canvas  
170 x 135 cm

(LB/M 57)



Lutz Braun, *One Hundred Years*  
detail

(LB/M 57)



Lutz Braun, *Archäologie*  
detail

(LB/M 53)



Lutz Braun, *Archäologie*  
oil on canvas  
68 x 116 cm

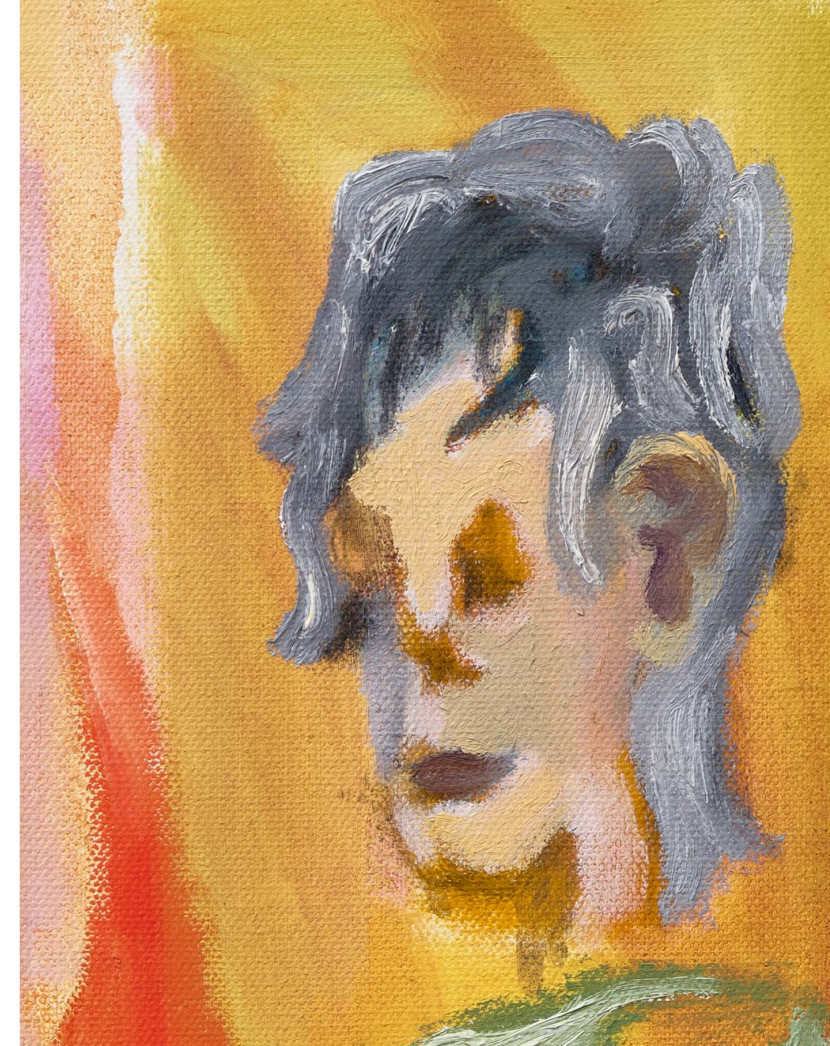
(LB/M 53)





Lutz Braun, *climate despair*  
oil on canvas  
70 x 50 cm

(LB/M 54)



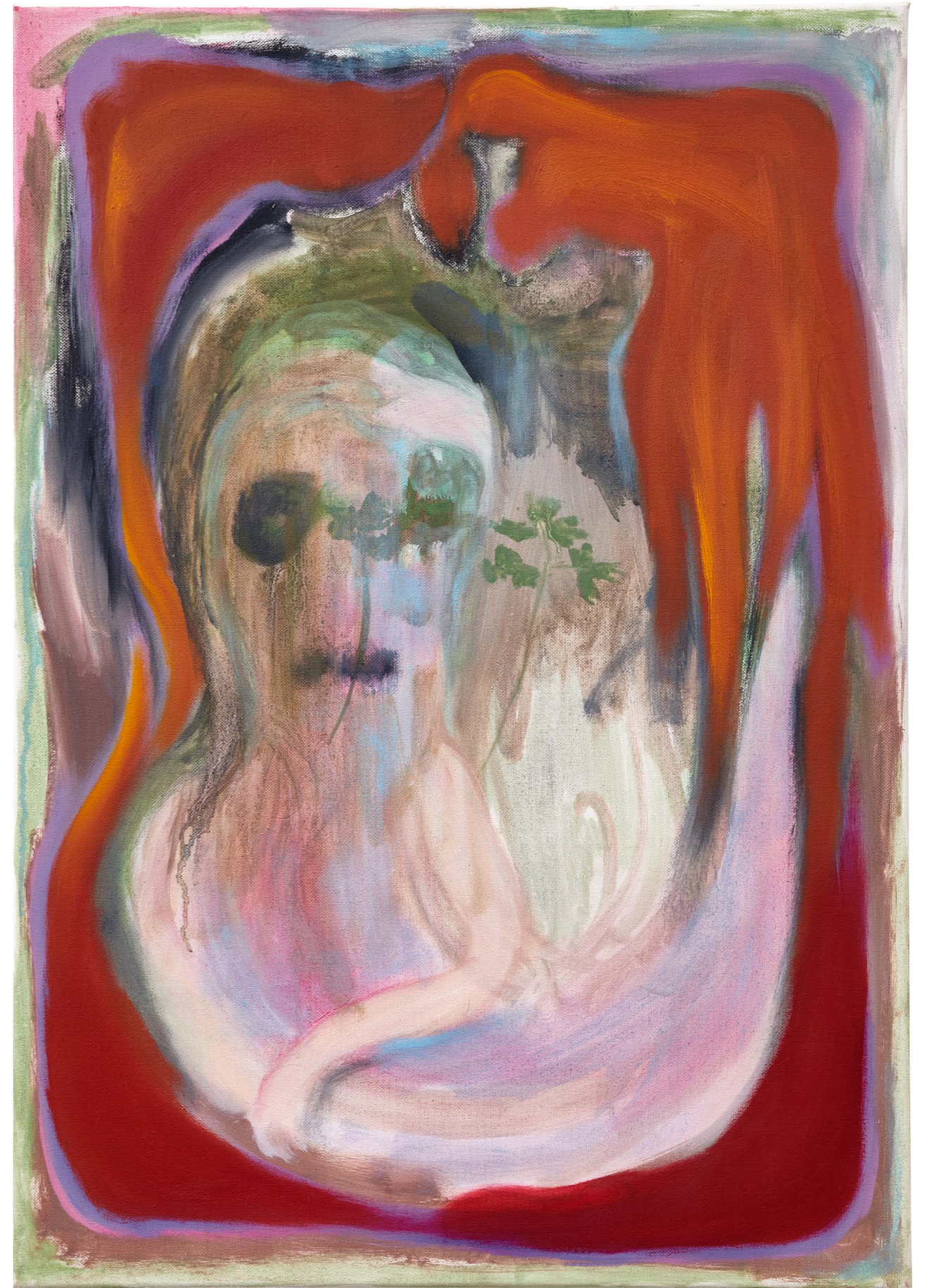
Lutz Braun, *climate despair*  
detail

(LB/M 54)



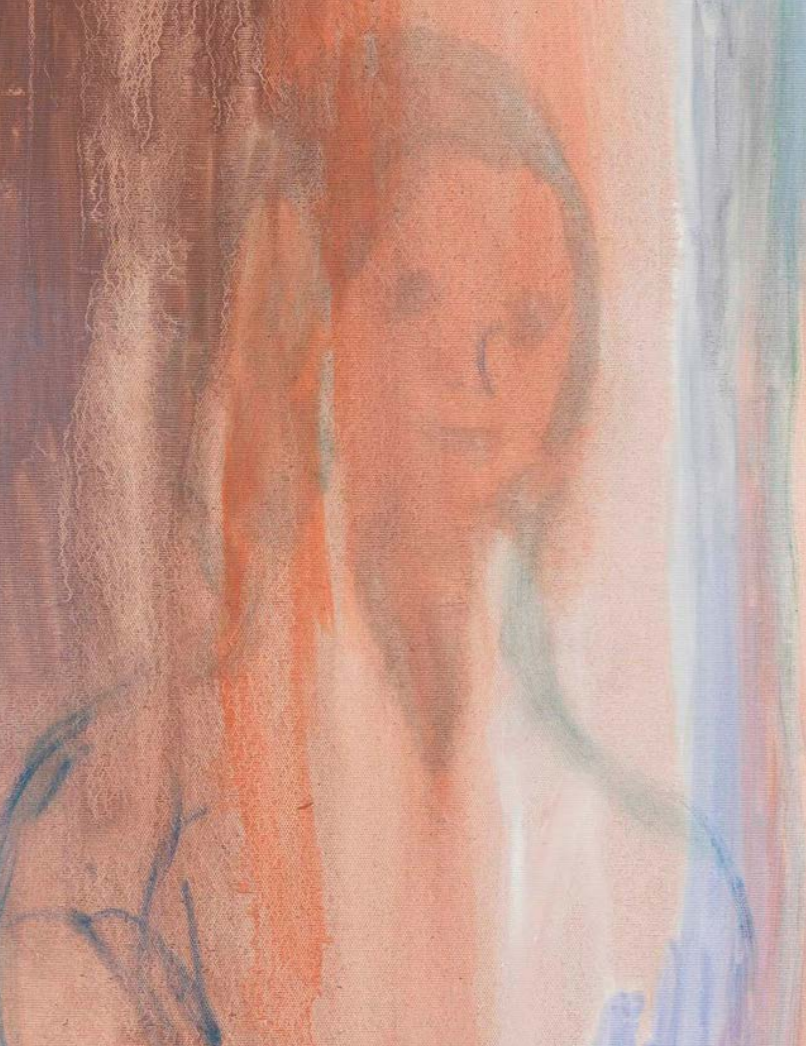
Lutz Braun, *curling up in parsley*  
detail

(LB/M 55)



Lutz Braun, *curling up in parsley*  
oil on canvas  
70 x 50 cm

(LB/M 55)



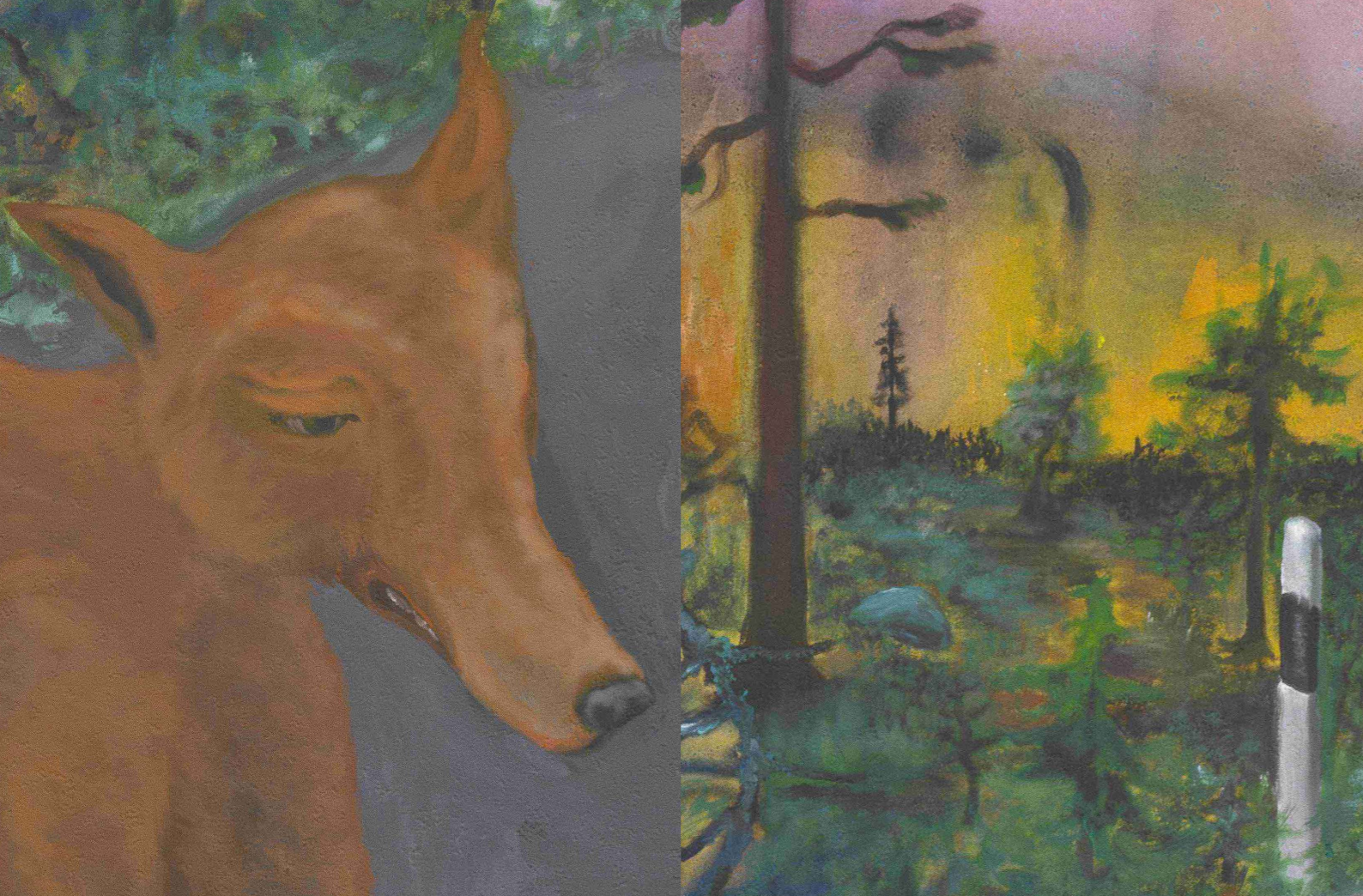
Lutz Braun, *Mother*  
detail

(LB/M 39)



Lutz Braun, *Mother*  
oil on canvas  
140 x 120 cm

(LB/M 39)



Lutz Braun, *Loss*  
details

(LB/M 37)



Lutz Braun, *Loss*  
acrylic on fresco canvas  
131 x 107 cm

(LB/M 37)



Lutz Braun, *devices from a dream*  
acrylic, oil on canvas  
72 x 72 cm

(LB/M 51)



Lutz Braun, *Zeitlinse*  
acrylic, oil on canvas  
71,5 x 71,5 cm

(LB/M 52)



Lutz Braun, *Meerkatze*  
oil on canvas  
60 x 80 cm

(LB/M 43)



Lutz Braun, *Träumender Löwe*  
acrylic on molleton  
60 x 70 cm

(LB/M 21)



Lutz Braun, *Hunger ohne Not*  
oil on canvas  
60 x 80 cm

(LB/M 56)





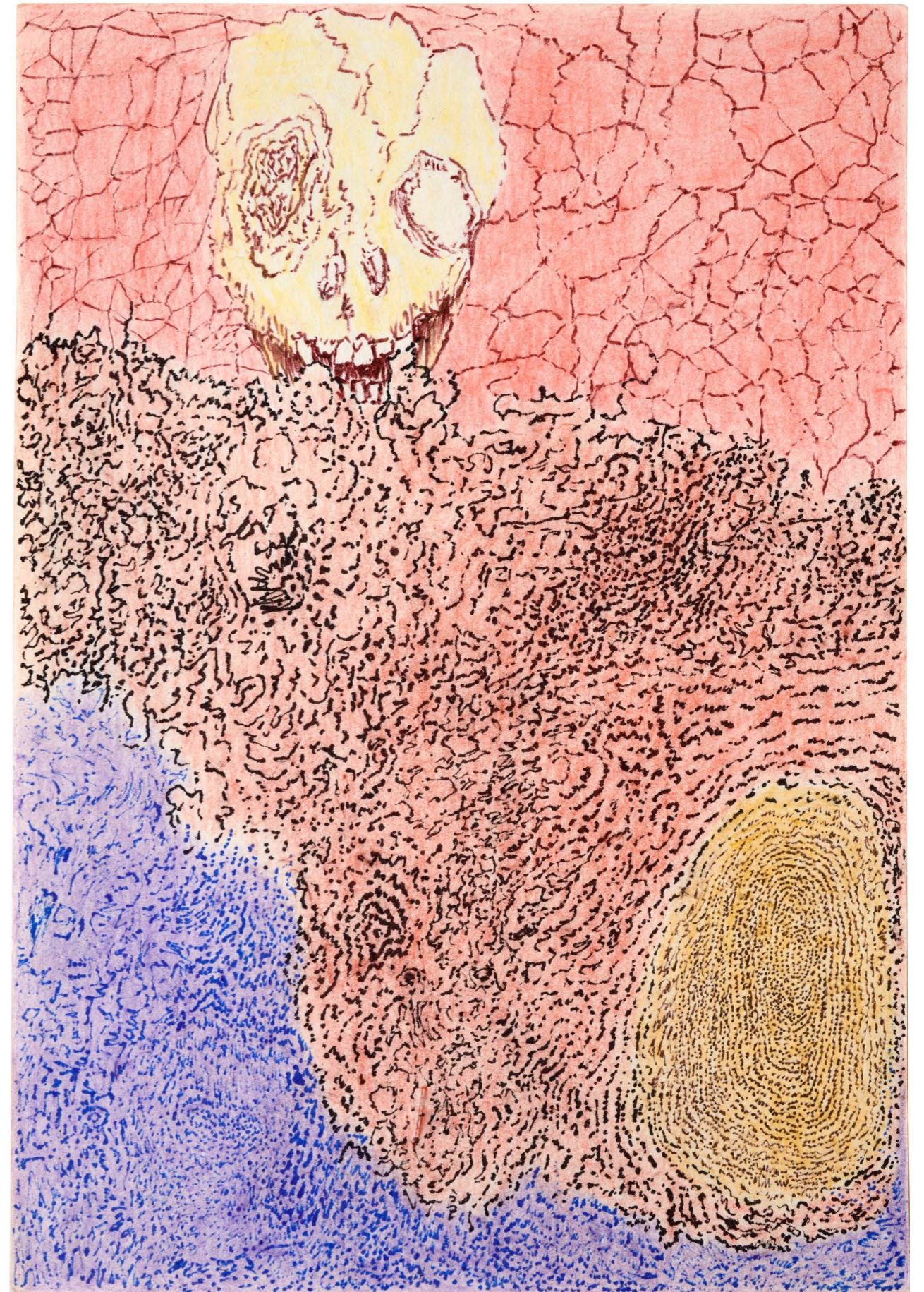
Lutz Braun, *Society*  
acrylic, oil on canvas  
83 x 76 cm

(LB/M 15)



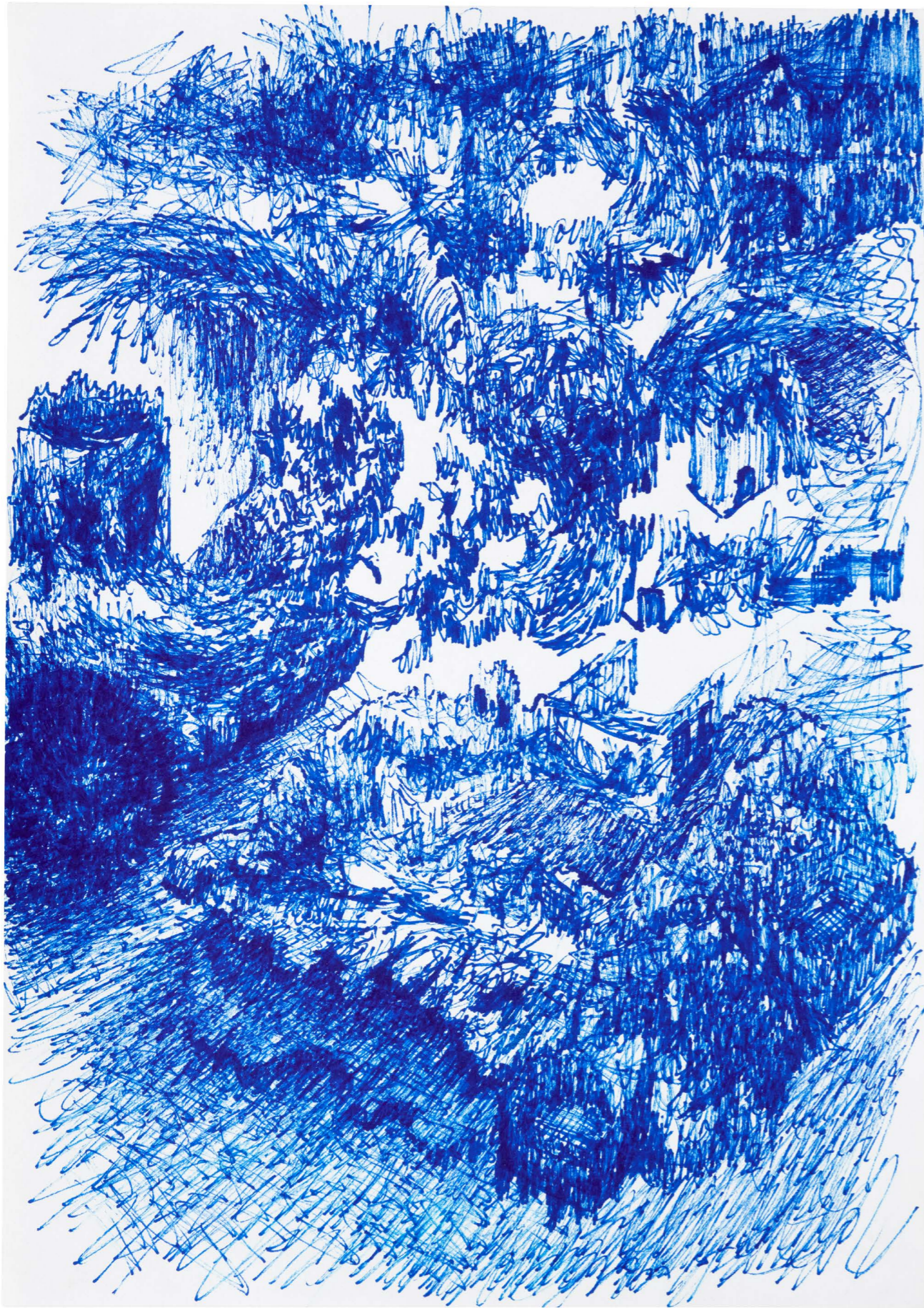
Lutz Braun, *Metal*  
ink, graphite on bamboo paper  
29,7 x 21 cm, framed

(LB/P 99)



Lutz Braun, *cosmic munchies*  
ink, colored pencil on hemp paper  
29,7 x 21 cm, framed

(LB/P 100)



Lutz Braun, *excavation*  
ink on paper  
29,7 x 21 cm, framed

(LB/P 101)



Lutz Braun, *Palmen im Grün*  
colored pencil and graphite on paper  
29,7 x 21 cm, framed

(LB/P 102)



Lutz Braun, *playground*  
ink, colored pencil on paper  
29,7 x 21 cm, framed

(LB/P 103)



Lutz Braun, *swedish hag*  
indian ink on hemp paper  
29,7 x 21 cm, framed

(LB/P 104)



Lutz Braun, *bound to fall*  
indian ink, oil crayon on hemp paper  
29,7 x 21 cm, framed

(LB/P 105)



Lutz Braun, *Wir weben, wir weben!*  
ink, colored pencil on paper  
29,7 x 21 cm, framed

(LB/P 106)